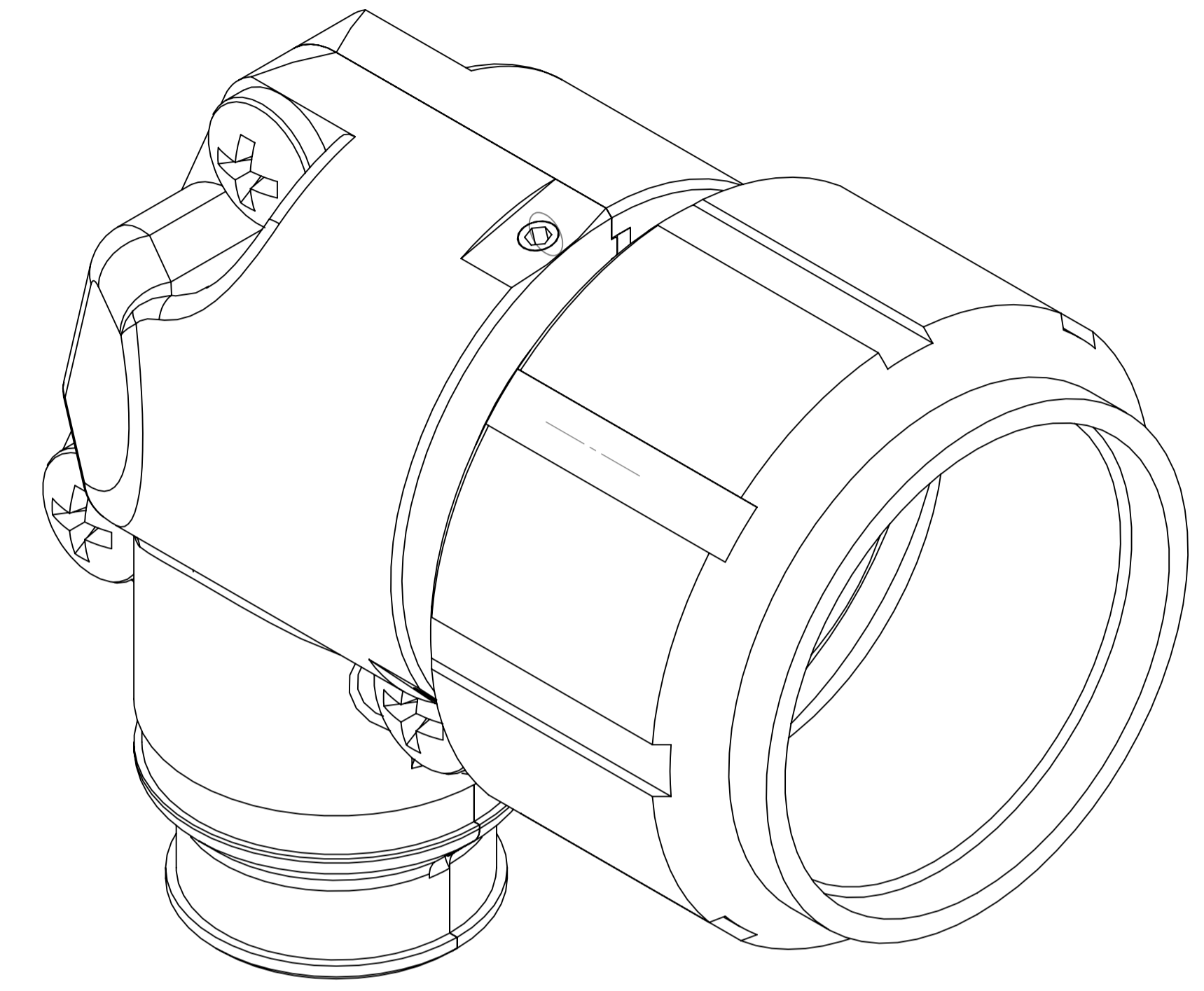
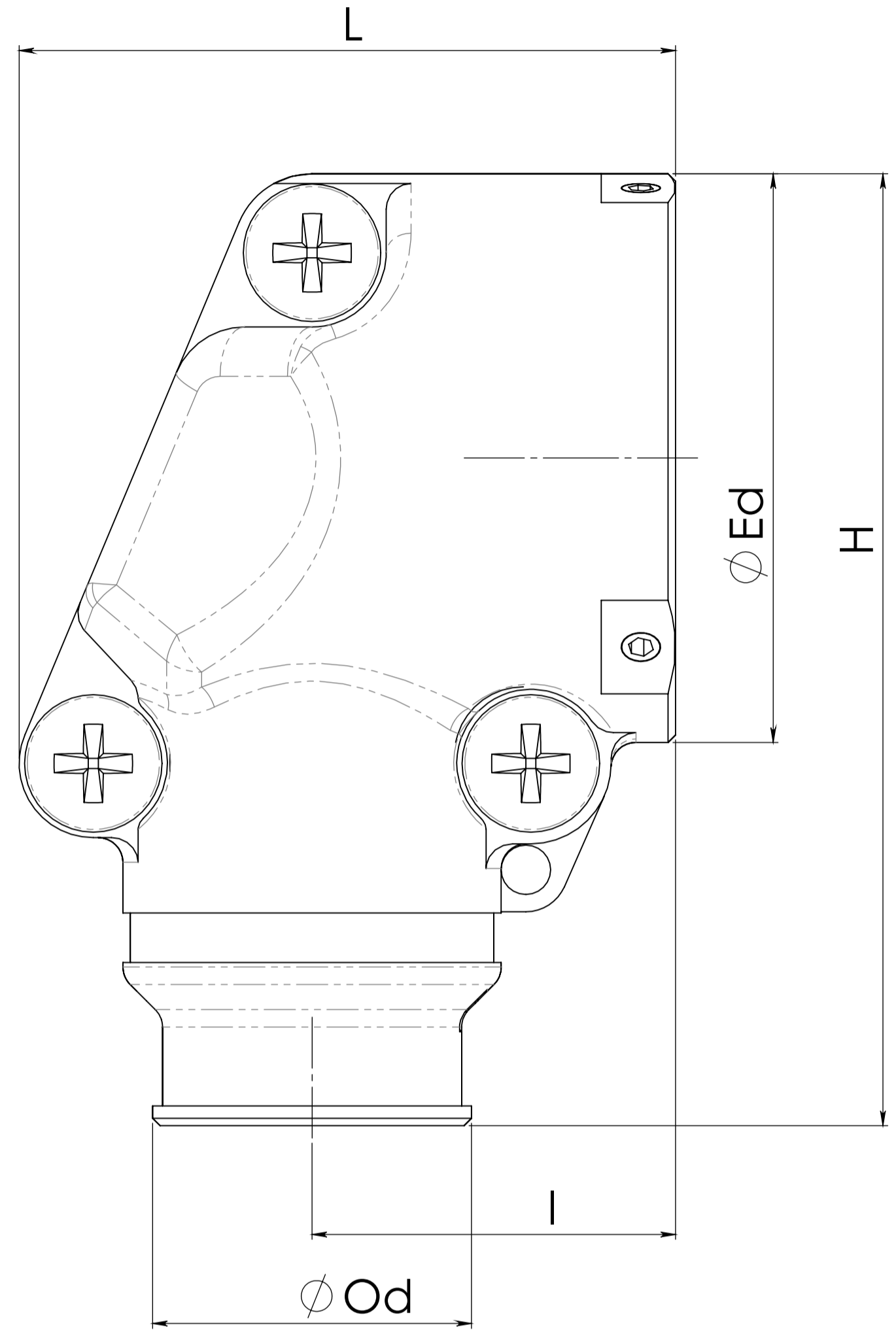
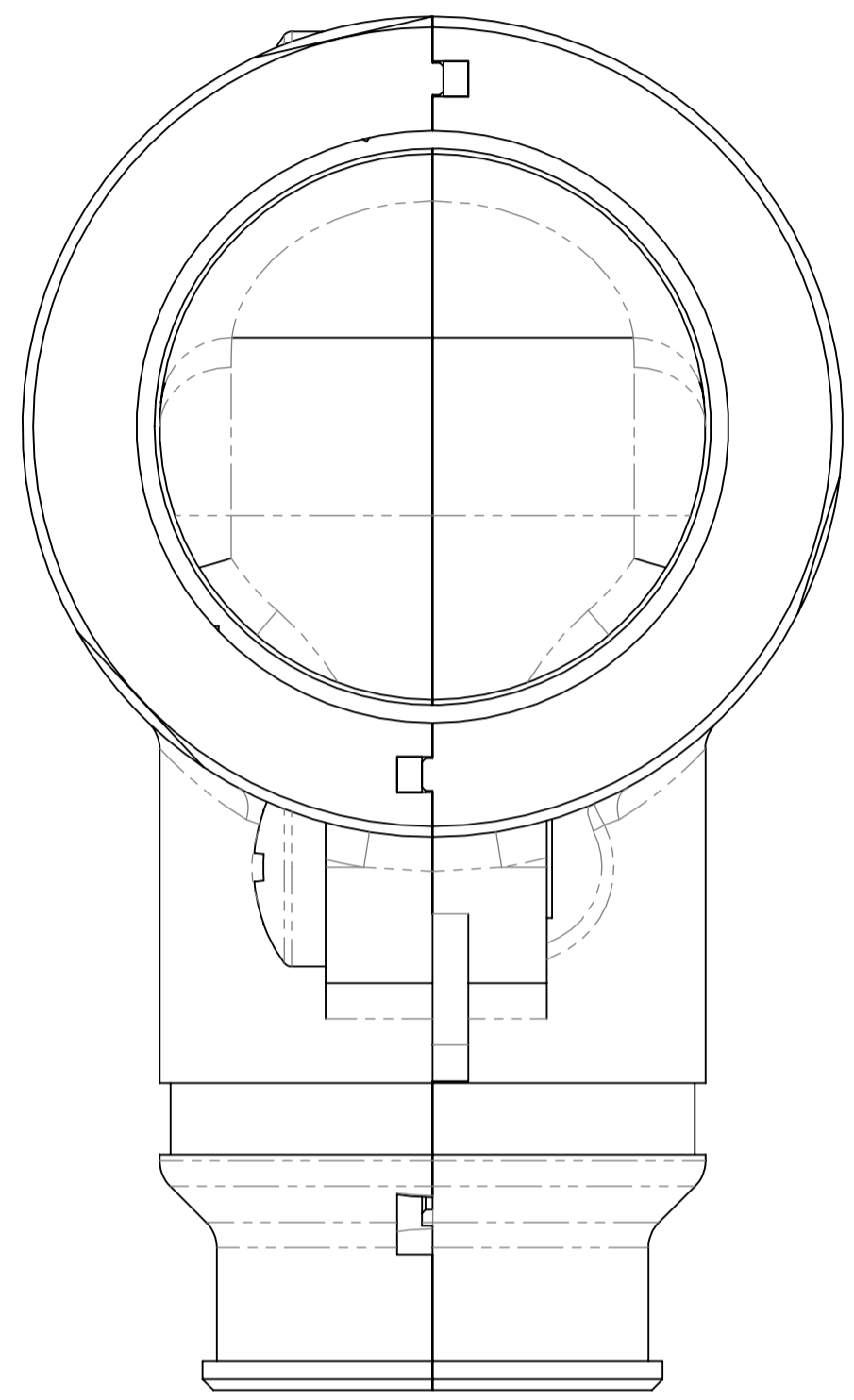


ZONE	REV.	DESCRIPTION	DATE	APPROVED
	A	RELEASED	08/01/2013	GREGORY



**VIEW WITH CONNECTOR**

**NOTES:**

1. OUTER SHELL - ALUMINUM  
COATING SELECTIVE:  
INTERNAL SURFACE -  
YELLOW ALODINE PER MIL-C-5541, CLASS 1A;  
EXTERNAL SURFACE -  
BLACK ANODIZE PER MIL-A-8625F, TYPE II, CLASS 2.
2. SCREW - STAINLESS STEEL, BLACK COATING.

P/N	DESCRIPTION	$\phi$ Ed	$\phi$ Od	H	L	I
IN09-KT-45	BACKSHELL 801 SE R,6 SIZE R/A,KIT	13.85	6.60	28.43	19.40	11.5
IN09-KT-43	BACKSHELL 801 SE R,9 SIZE R/A,KIT	19.20	7.60	33.60	19.40	11.5
IN09-KT-44	BACKSHELL 801 SE R,13 SIZE R/A,KIT	23	12.90	38.50	26.55	14.7

TOLERANCES UNLESS OTHERWISE STATED		MATERIAL:	FINISH:	MASS:
LINEAR ±0.2	HOLES DIA +	SEE NOTE	SEE NONE	18.84
ANGULAR ±	MASH, SURF'S N7			
DRAWN	NAME	SIGNATURE	DATE	TITLE
DES'ND	ELEHA	E.L.		<b>BACKSHELLS 801 SER.,R/A</b>
CHK'D	GREGORY	G.L.		
APP'VD		I.K.		
		I.K.		
<small>THIS DOCUMENT CONTAINS PROPRIETARY INFORMATION AND SHALL NOT BE REPRODUCED OR USED FOR ANY PURPOSE WITHOUT THE PRIOR WRITTEN PERMISSION OF A.I.L. DO NOT MANUALLY UPDATE. DO NOT SCALE DRAWING.</small>			PART. NO. SEE TABLE DWG. NO. <b>IN09-DS-43-A</b> SIZE A3 FIRST ANGLE PROJECTION	VERSION REV. 01 SHEET 1/1 DIM UNIT MM SCALE 5:1
<small>CONTACT INFO: Tel: +972(0)8-9400002; Fax:972(0)3-7256610 Mobile: +972(0)50-651606; E-mail: office@intaltech.com</small>				

P:\Projects\Projects in R&D Status\Intal Tech\IN09 Backshell for Micro D-Type\0 IN09\IN09-DS-43-A 13/01/2013