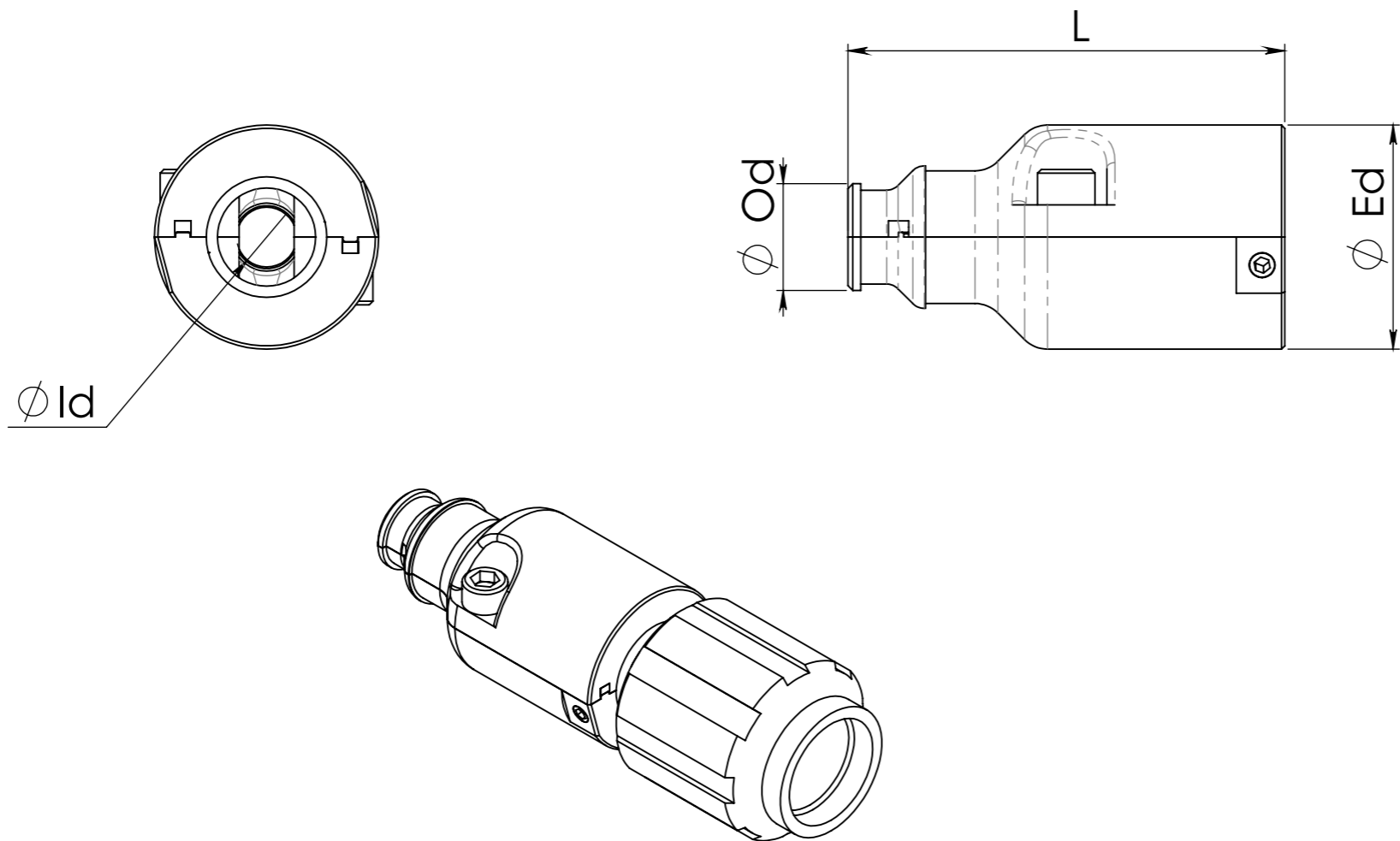


P:\Projects\Projects in R&D Status\InTal Tech\IN09 Backshell\IN09 Backshell for Micro D-Type\0 IN09\IN09-DS-42-A 13/01/2013

1	2	3	4	5	6	7	8
ZONE		REV.	DESCRIPTION		DATE	APPROVED	
		A	RELEASED		08/01/2013	GREGORY	


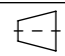
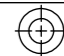


VIEW SHOWN WITH CONNECTOR

NOTES:

1. OUTER SHELL - ALUMINUM
COATING SELECTIVE:
INTERNAL SURFACE - YELLOW ALODINE PER MIL-C-5541, CLASS 1A;
EXTERNAL SURFACE - BLACK ANODIZE PER MIL-A-8625F, TYPE II, CLASS 2.
2. SCREW - STAINLESS STEEL, BLACK COATING.

P/N	DESCRIPTION	ϕEd	ϕOd	ϕId	L
IN09-KT-46	BACKSHELL 801 SER, 6 SIZE KIT	13.85	5.80	2.90	27
IN09-KT-48	BACKSHELL 801 SER, 7 SIZE KIT	16.40	6.40	3.50	27
IN09-KT-42	BACKSHELL 801 SER, 9 SIZE KIT	19.20	7.60	4.60	30
IN09-KT-47	BACKSHELL 801 SER, 13 SIZE KIT	23	9.40	6.40	32

TOLERANCES UNLESS OTHERWISE STATED				MATERIAL:	FINISH:	MASS:		
LINEAR	±	HOLES DIA	+					
ANGULAR	±	MASH. SURF'S						
NAME	SIGNATURE	DATE	TITLE					
DRAWN	ELENA		BACKSHELLS 801 SER., STRAIGHT					
DES'N'D	GREGORY		PROJECT					
CHK'D			PART. NO.					
APP'V'D			SEE TABLE			VERSION		
THIS DOCUMENT CONTAINS PROPRIETARY INFORMATION AND SHALL NOT BE PUBLISHED OR USED FOR ANY PURPOSE WITHOUT THE PRIOR WRITTEN PERMISSION OF INTALTECH Ltd. DO NOT MANUALLY UPDATE. DO NOT SCALE DRAWING.			 Engineering Development & Consulting		DWG NO.			
					IN09-DS-42-A		REV.	SHEET
					A	1/1		
SIZE	A3	FIRST ANGLE PROJECTION			DIM UNIT	SCALE		
		MM				2.5:1		