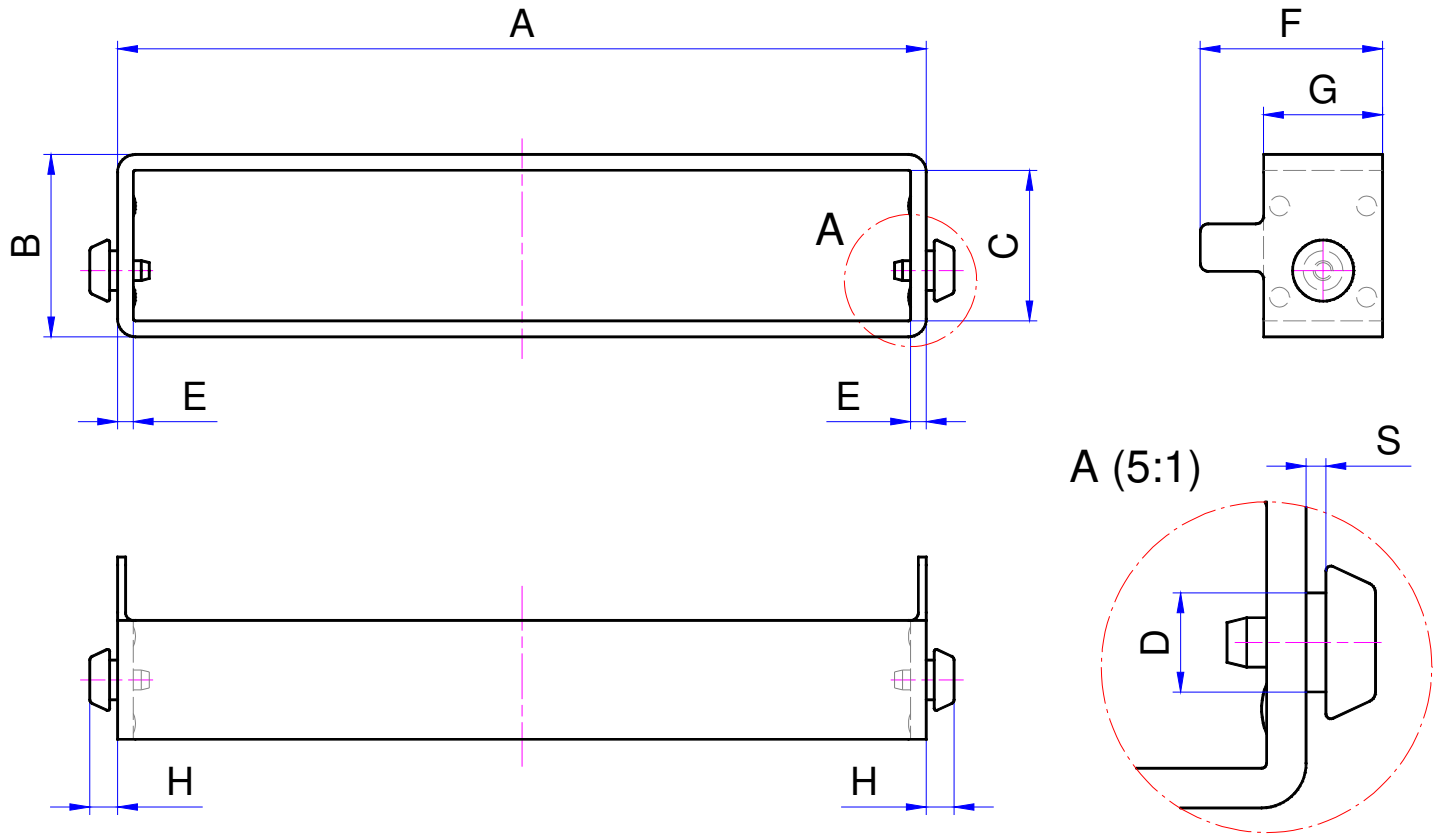




Material: TPE (Thermoplastic elastomer)
Colour: black
Hrdness: approximately 65 °Shore A
Temperature resistance: from -40 to +100° C
Fire resistance: UL94-V-0
Equals guideline: EG 2002/95 (RoHS) & EG 1907/2006 (REACH)



Article number: **HDM** - **25** - **070** - **10 oder 20**
 Article hard disk size hard disk height panel thickness
 25 = 2,5 inches dimension C 10 = from 0,75 to 1,25 mm
 35 = 3,5 inches in 1/10 mm 20 = from 1,50 to 2,50 mm

New!

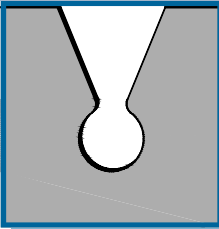
Hard disk sleeves HDM-25-070-10 and HDM-25-070-20 are specially developed for 7 mm high SSD devices!

Article No.	A	B	C	D	E	F	G	H	S	panel thickness
HDM-25-070-10	73,4 *	10,0	7,0	5,0	1,5	16,0	10,0	3,5	1,0	0,75 bis 1,25
HDM-25-070-20	73,4 *	10,0	7,0	5,0	1,5	16,0	10,0	4,5	2,0	1,5 bis 2,5
HDM-25-095-10	73,4 *	12,5	9,5	5,0	1,5	16,0	10,0	3,5	1,0	0,75 bis 1,25
HDM-25-095-20	73,4 *	12,5	9,5	5,0	1,5	16,0	10,0	4,5	2,0	1,5 bis 2,5
HDM-35-254-10	106,1 *	29,4	25,4	6,0	2,0	23,0	15,0	3,5	1,0	0,75 bis 1,25
HDM-35-254-20	106,1 *	29,4	25,4	6,0	2,0	23,0	15,0	4,5	2,0	1,5 bis 2,5

All dimensions in mm! Other HDM hard disk sleeves on request CAD-datas at: www.thoptec.de

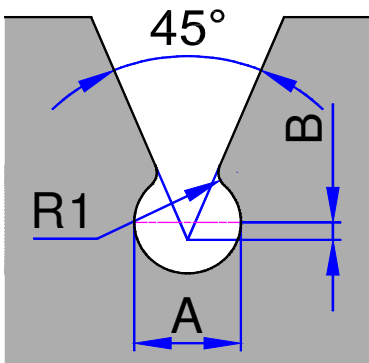
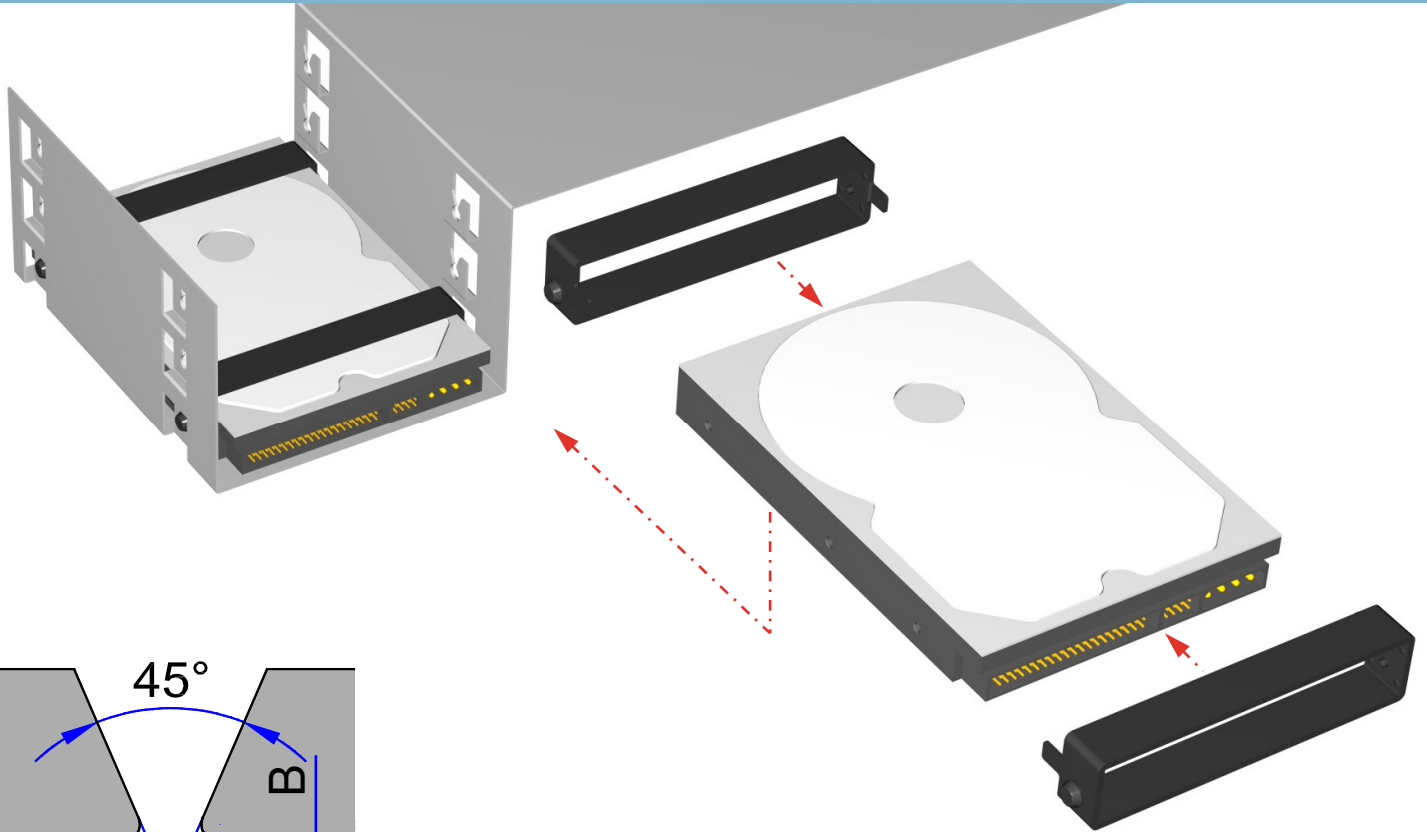
Legend: * dimension A refers to size after the sleeve was pushed/ pulled over the hard disk!

Size A:	width outside	Size D:	diameter of the plug-in peg	Size G:	depth outside
Size B:	height outside	Size E:	gap between hard disk/ panel	Size H:	height of the plug-in peg
Size C:	height inside	Size F:	depth overall	Size S:	clearance plug-in peg



Recommended cut-out/ dimensions for housing boxes or mounting frames.

With the elastic hard disk sleeves you can fix hard disks without tools in a very quick and safe way. Therefore the housingboxes or mounting frames needs to be manufactured/ adjusted accordingly. (see recommended cut-out and mounting examples). To assemble the hard disks with housing boxes or mounting frames you always need a pair of hard disk sleeves.



Recommended cut-out for housing boxes and mounting frames.

	A	B
for HDM-25	5,2 ^{+0.2}	0,5
for HDM-35	6,2 ^{+0.2}	1,0

Mounting information:

Both hard disk sleeves will be pushed/ pulled over the hard disk, until the inside-pins of the sleeve will match to the drilled holes of the hard disk.

Please bear in mind, that the pins are justified downwards.

Then the plug-in pegs of the sleeves need to be pushed into the conical cut-outs, until they have been snapped in.

Attention!

By adjusting the size of radius R1 and the dimension of B the resistance of power to mount and dismount the hard disk sleeves can be altered.

Examples for mounting frames

